

# Mark Hotel

Projet déco

Réhabilitation du Mark Hotel

## Localisation

New York (USA)

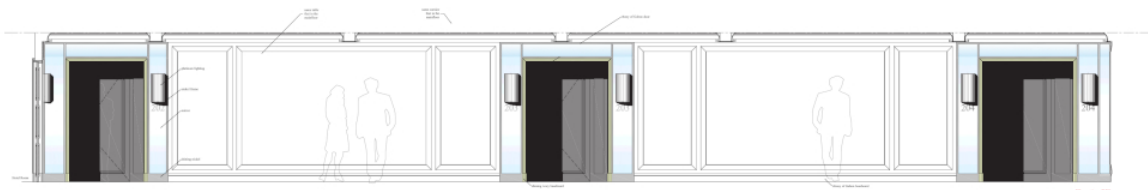
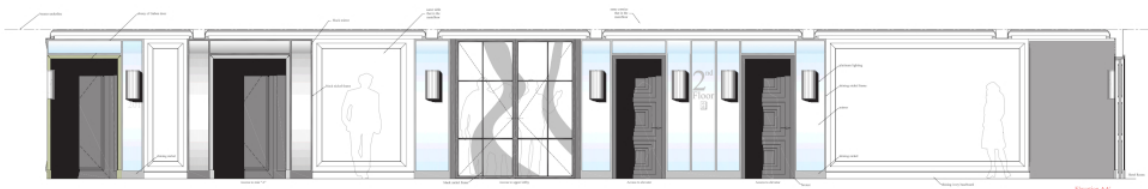
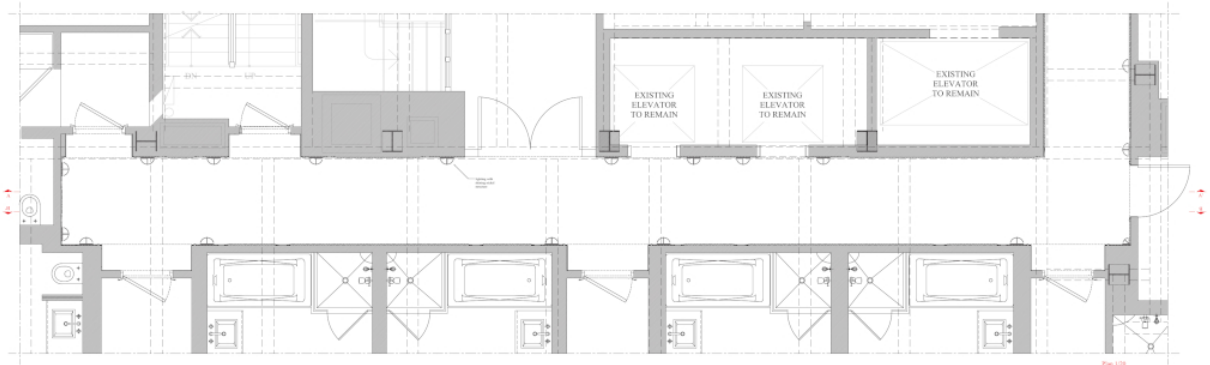
## Détails

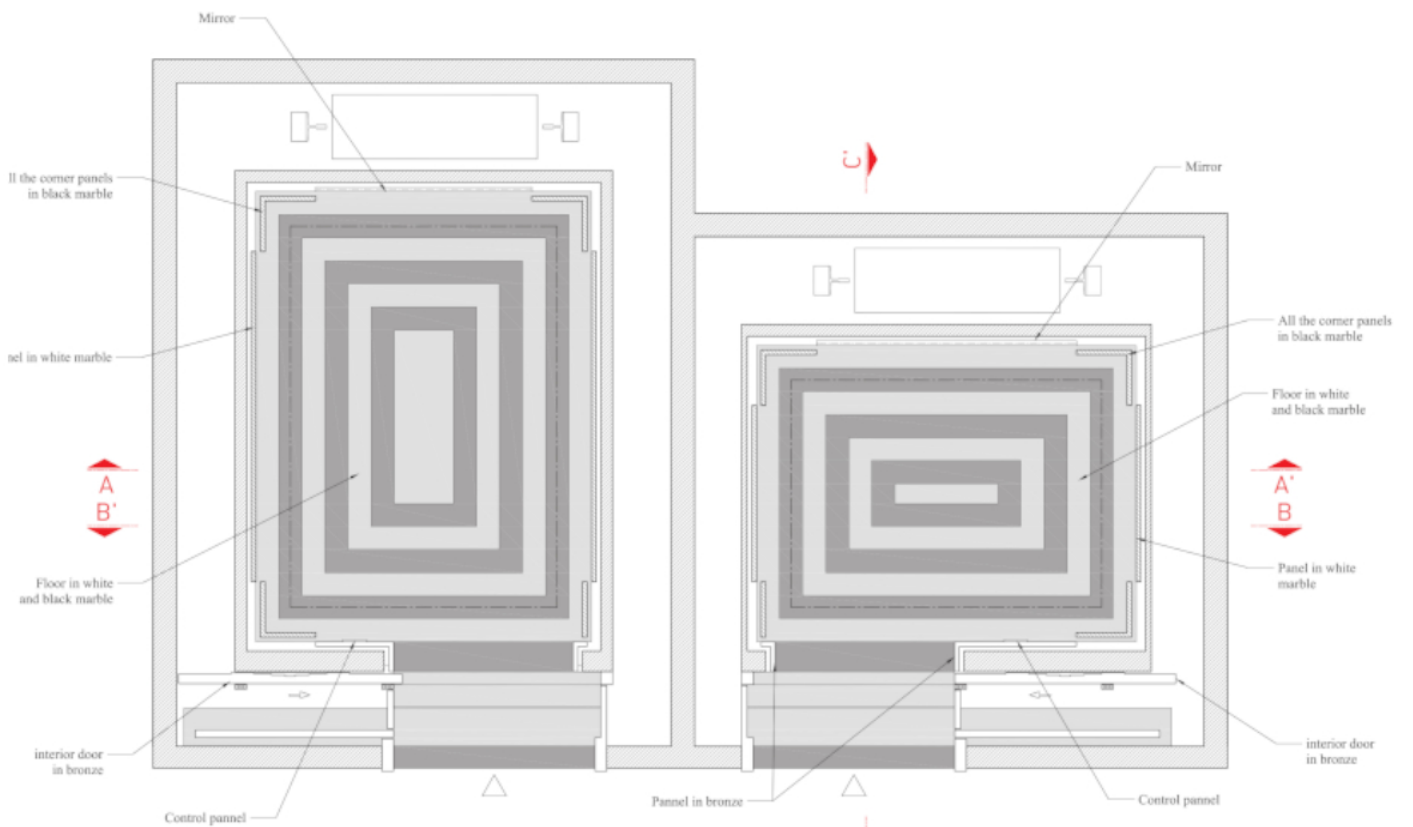
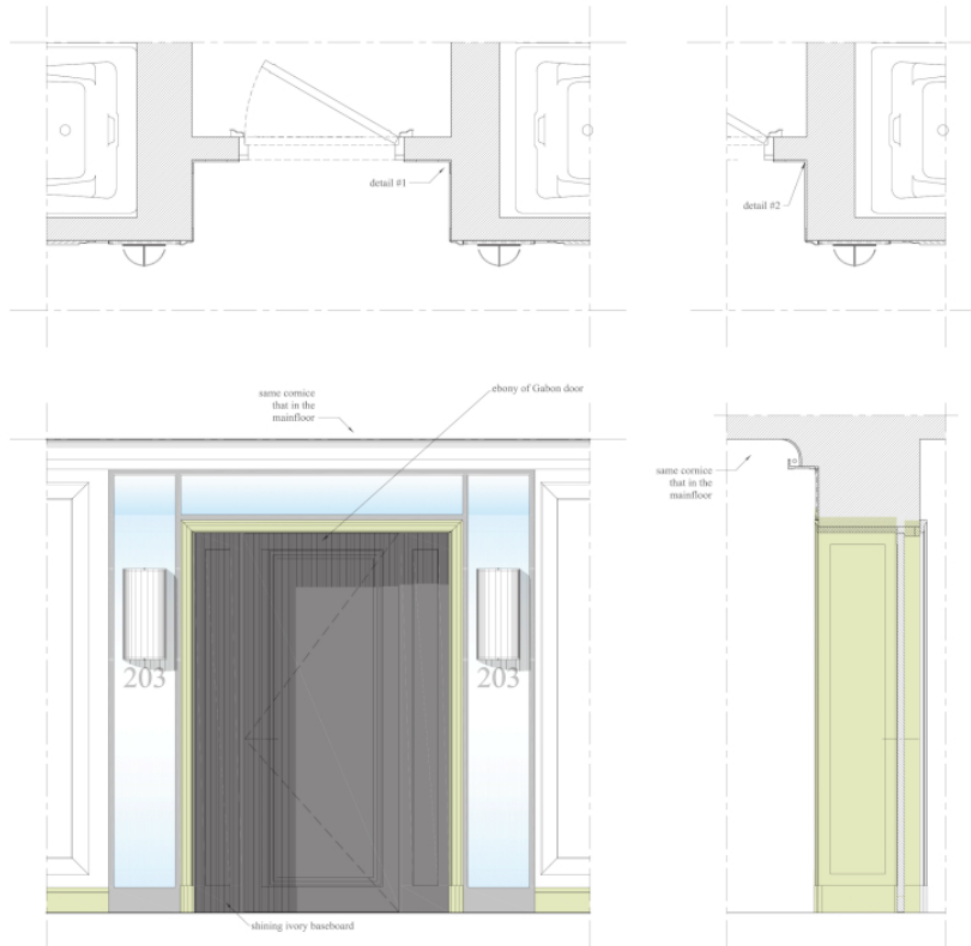
Projet réalisé - DCE

## Collaboration

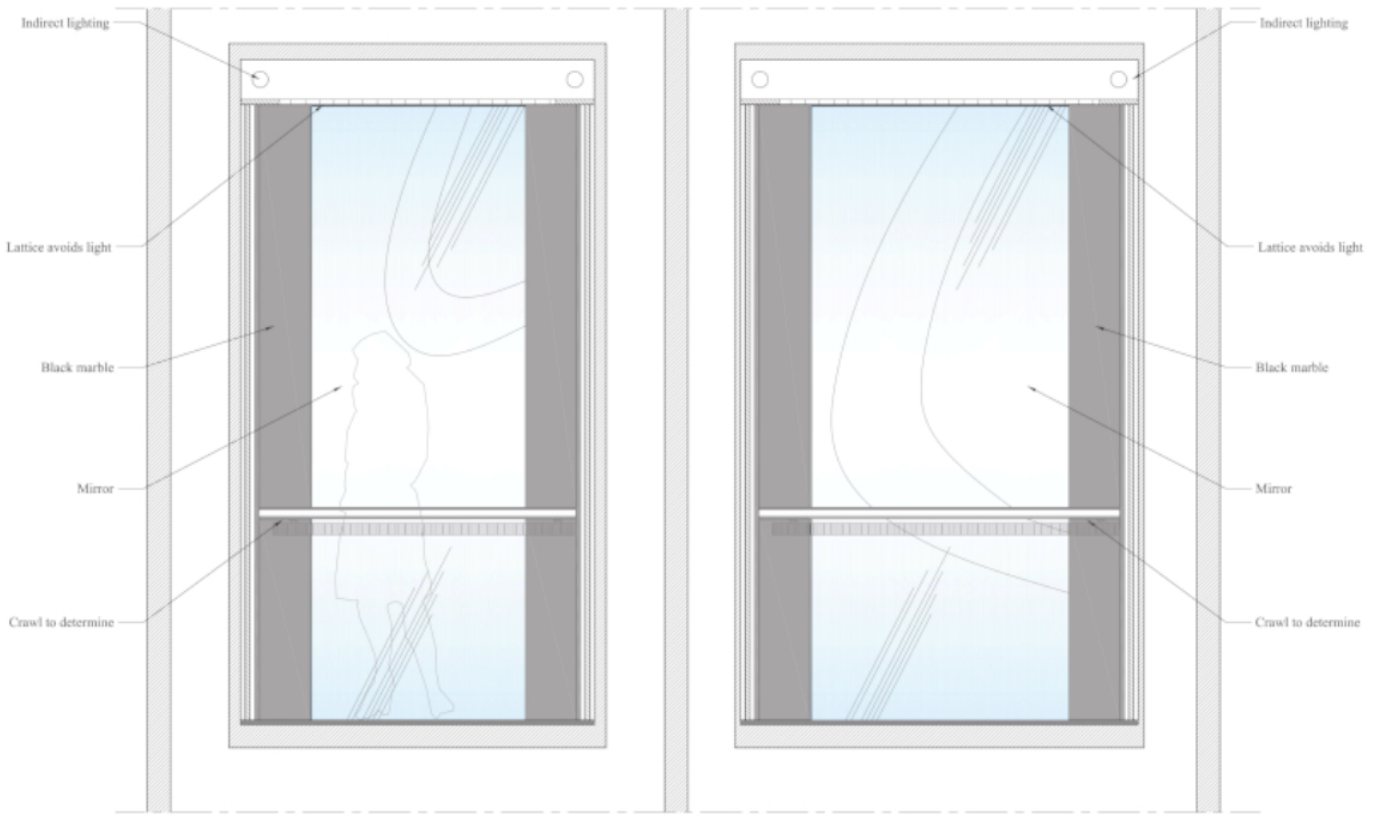
Unza Architecture, Jacques Grange Office



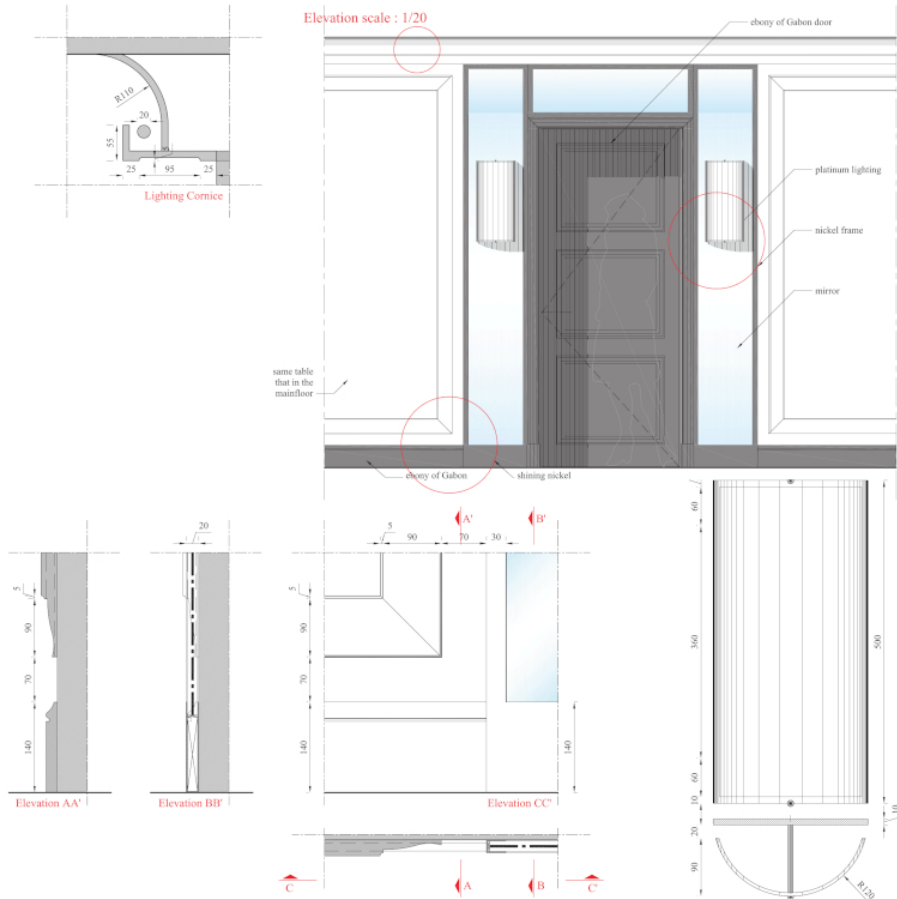


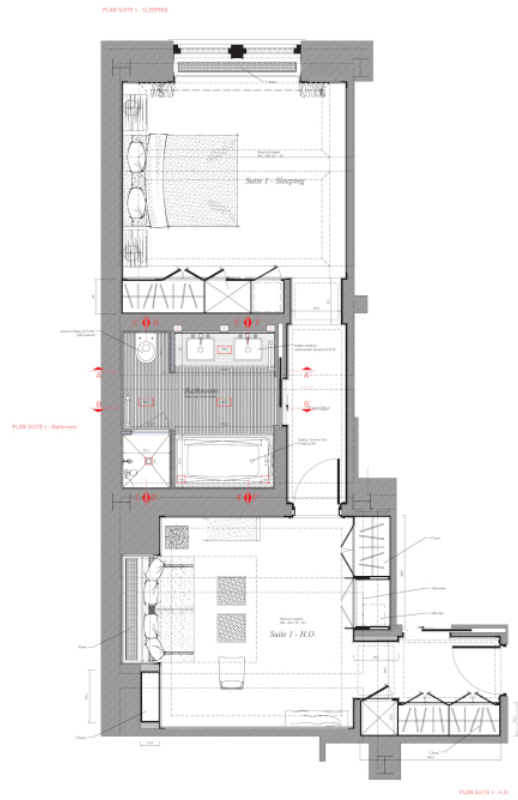
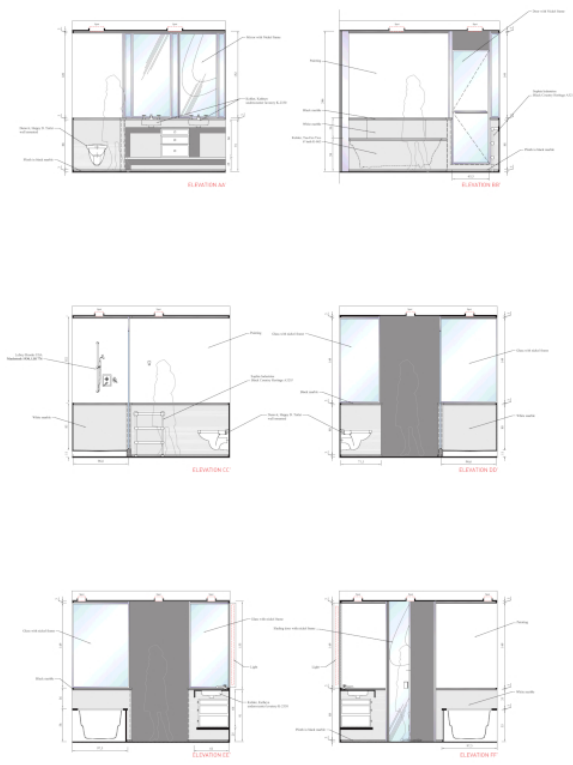
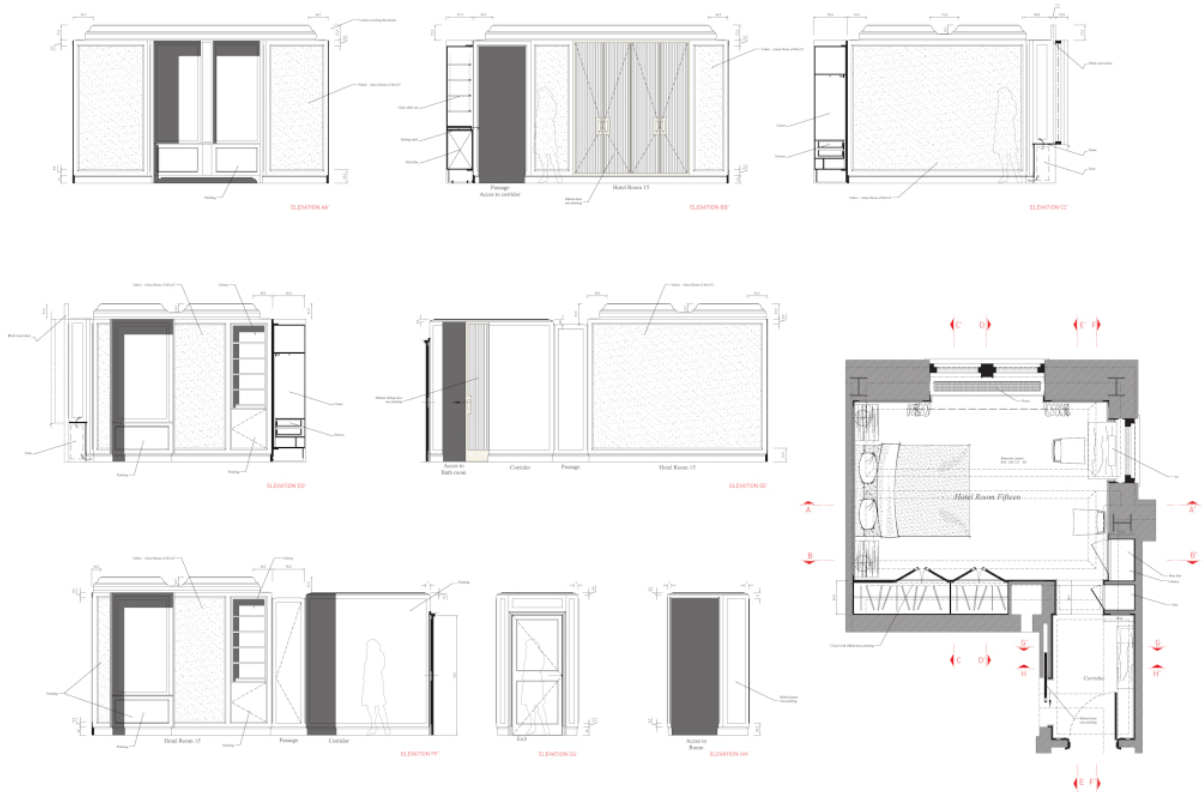


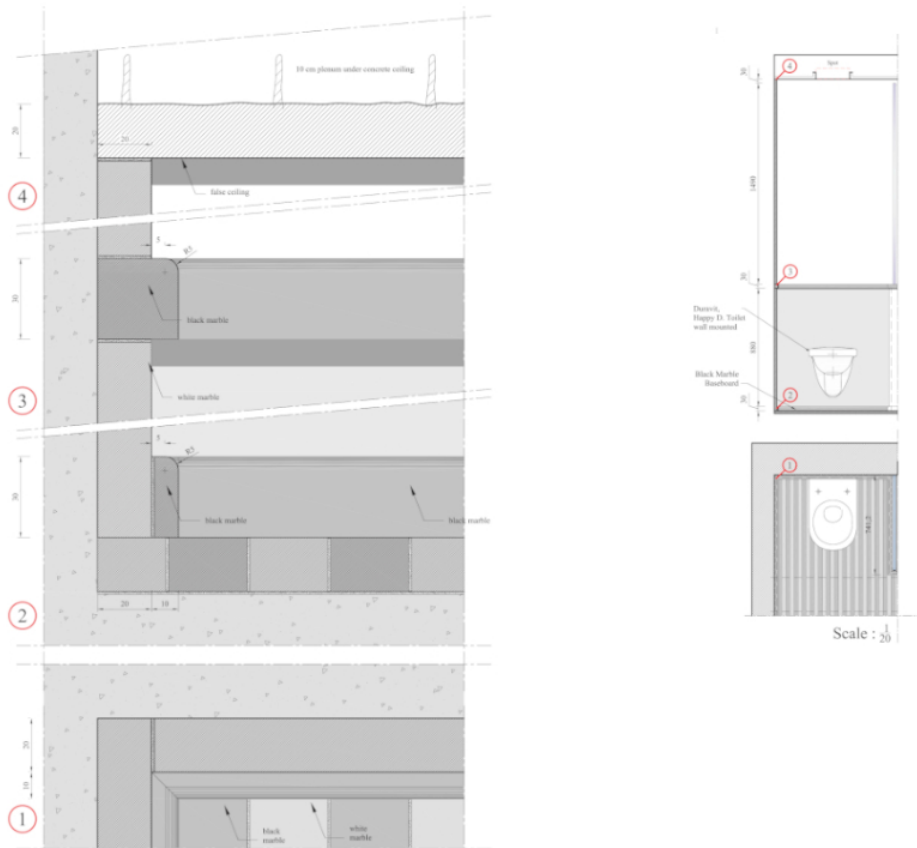
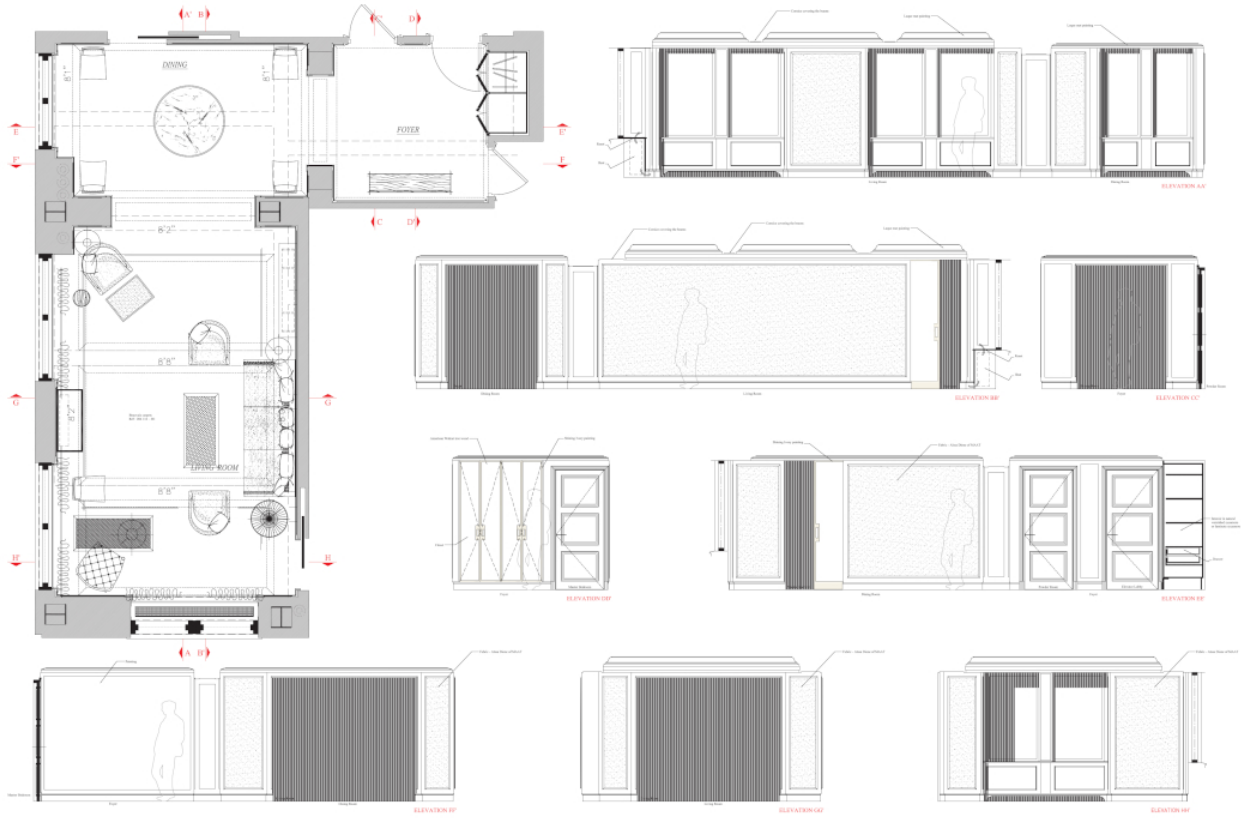
Mainfloor Lobby

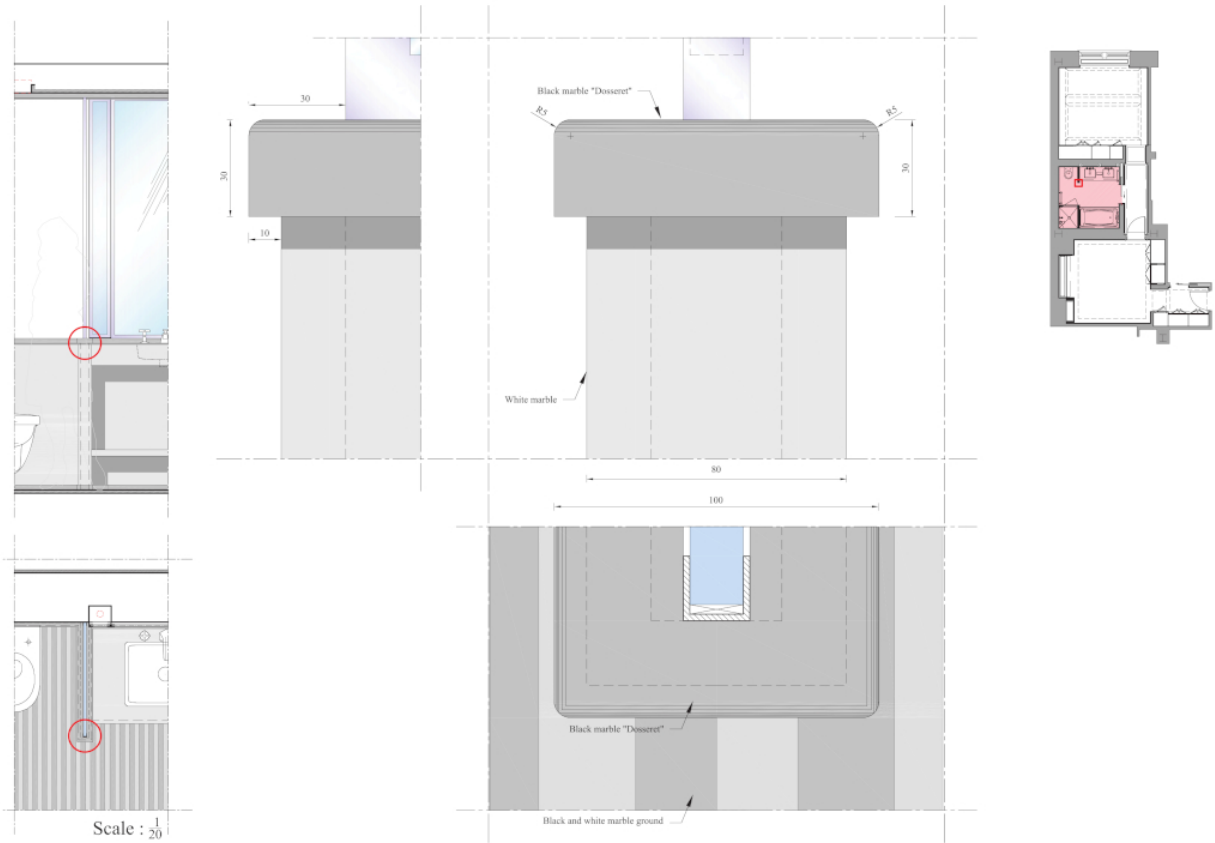


Elevation AA'

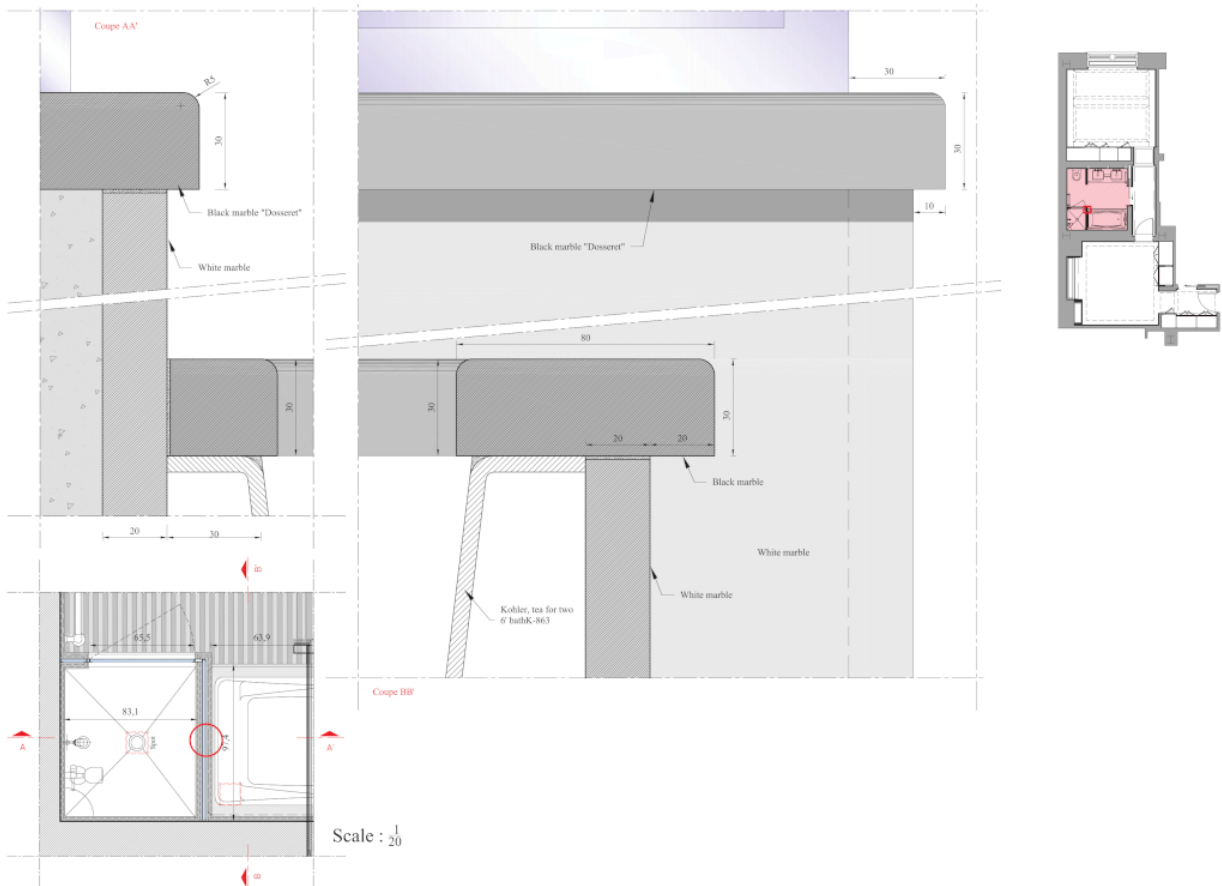




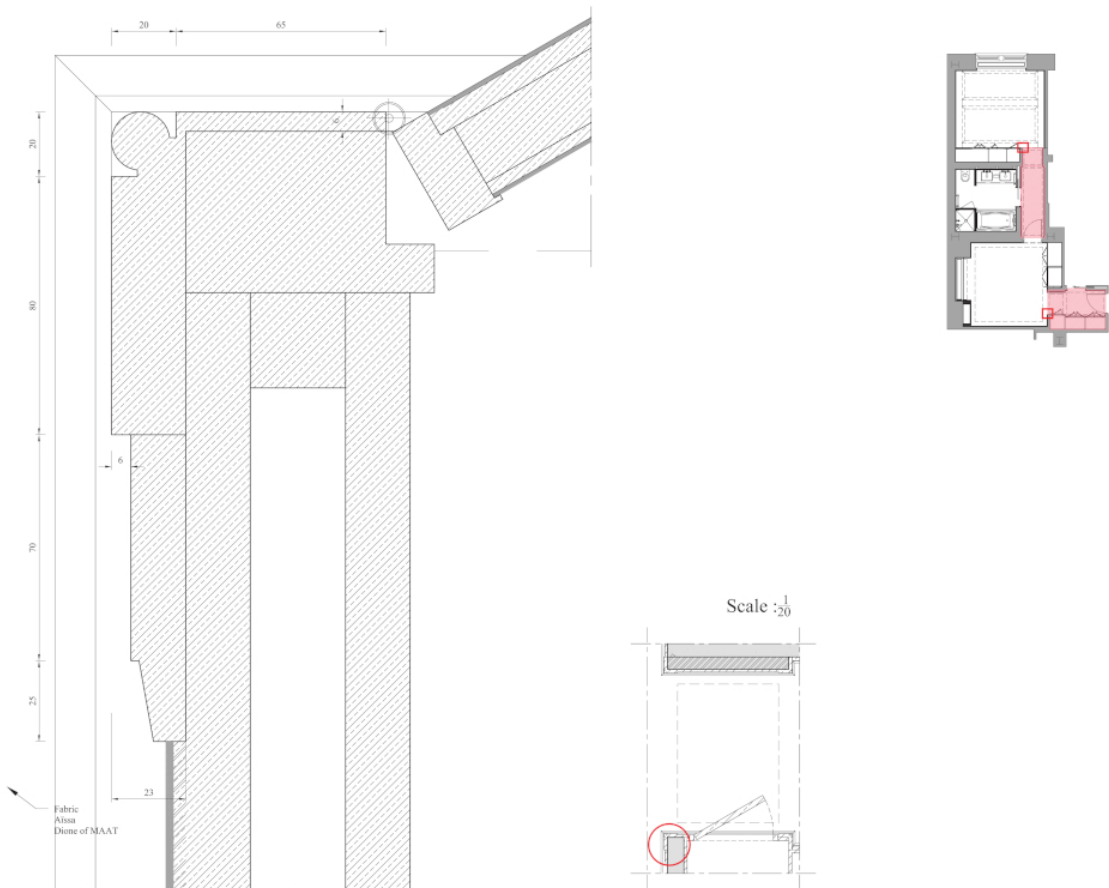
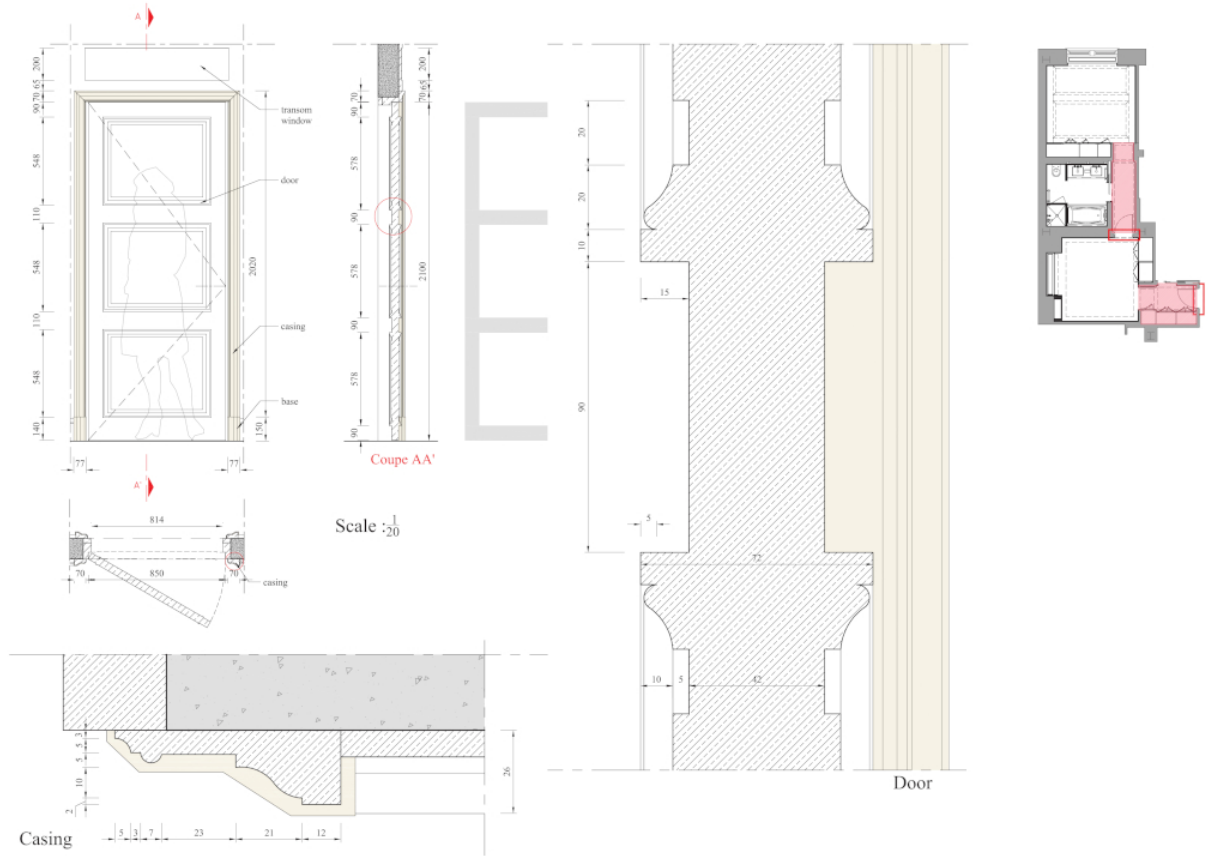


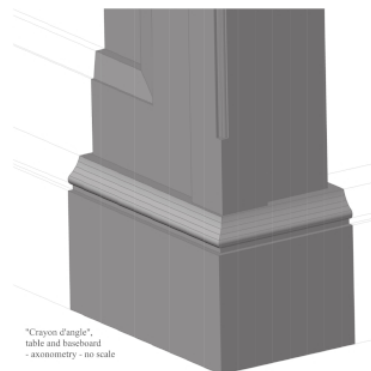
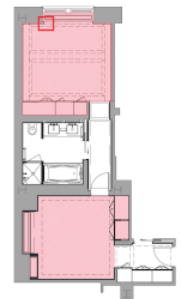
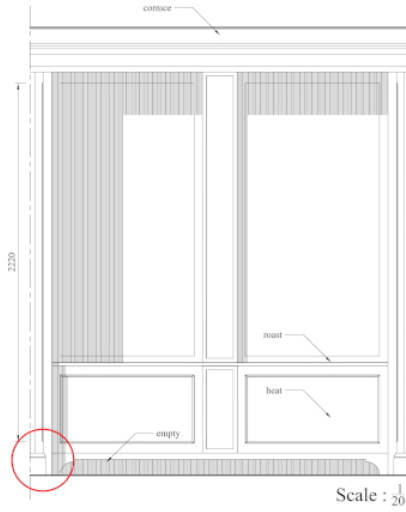
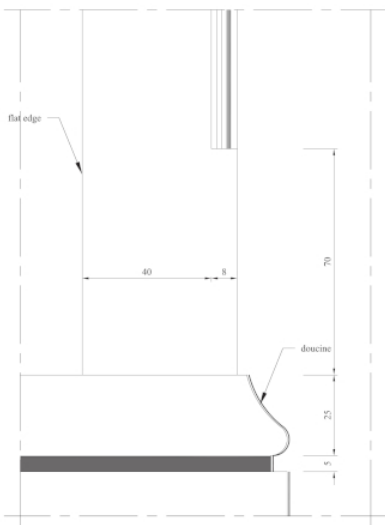
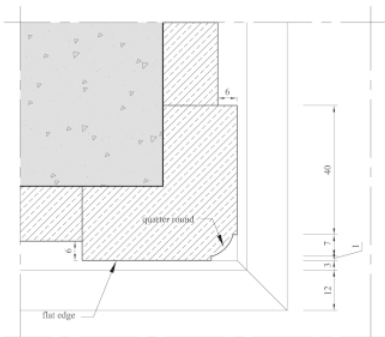
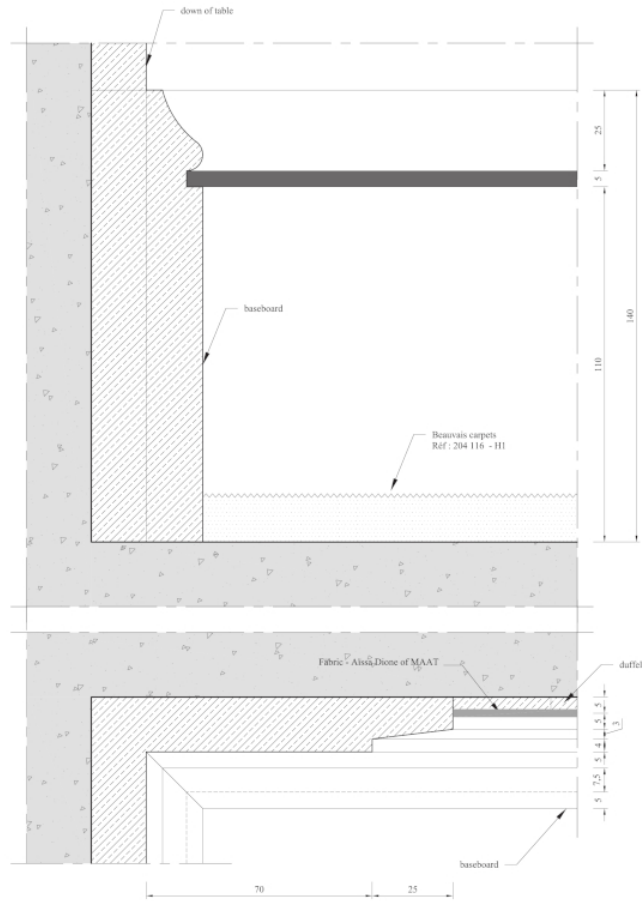
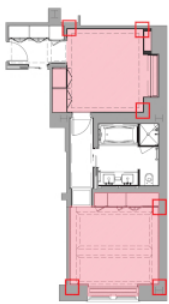


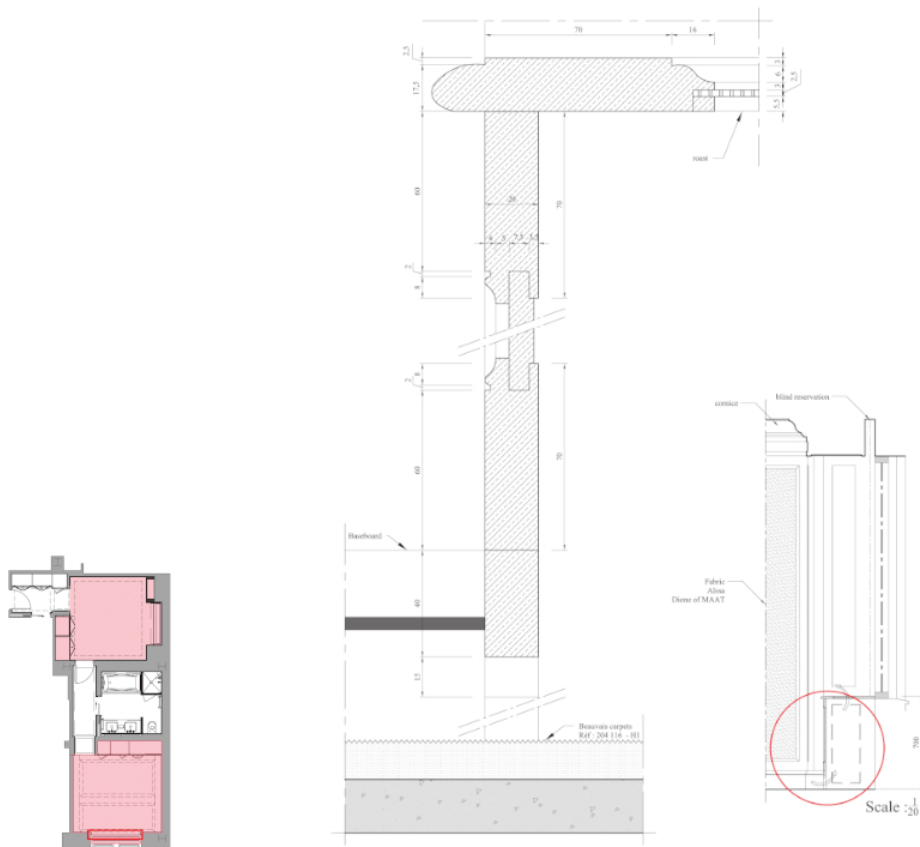
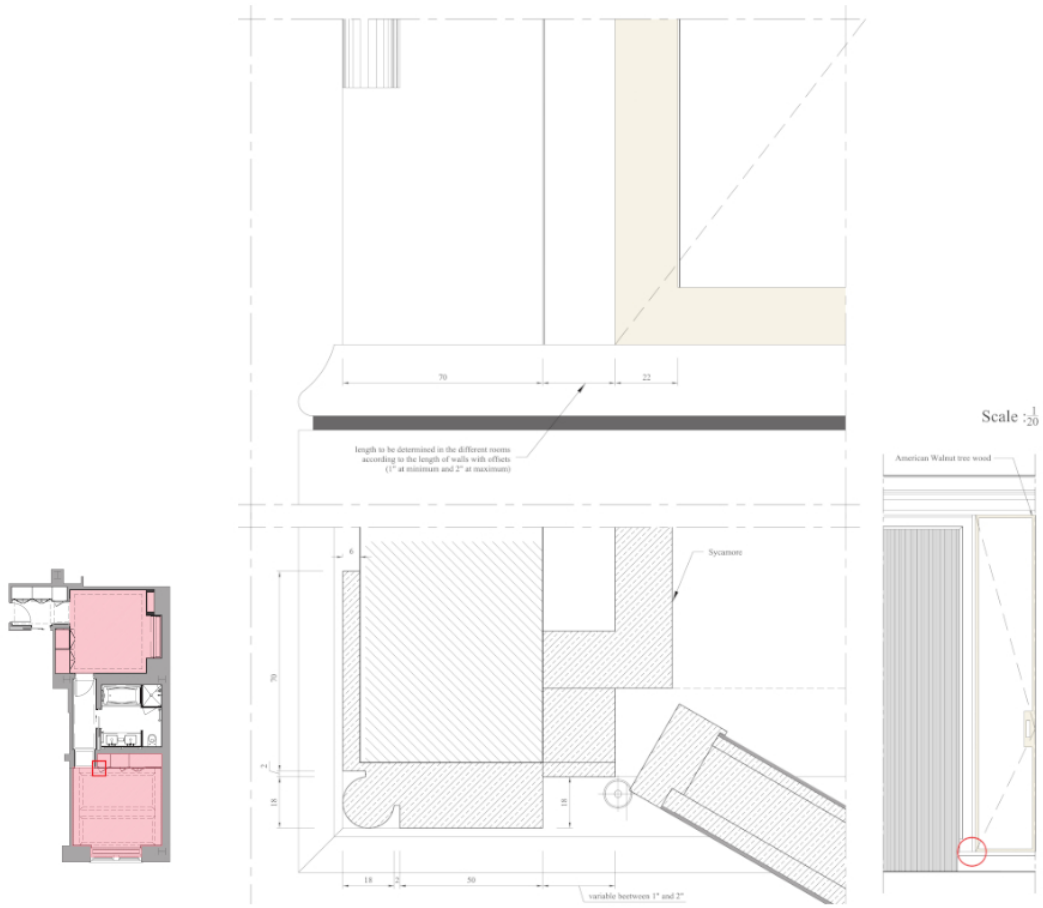
Scale :  $\frac{1}{20}$

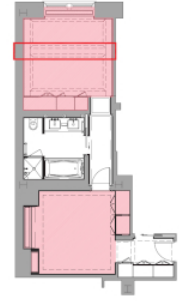
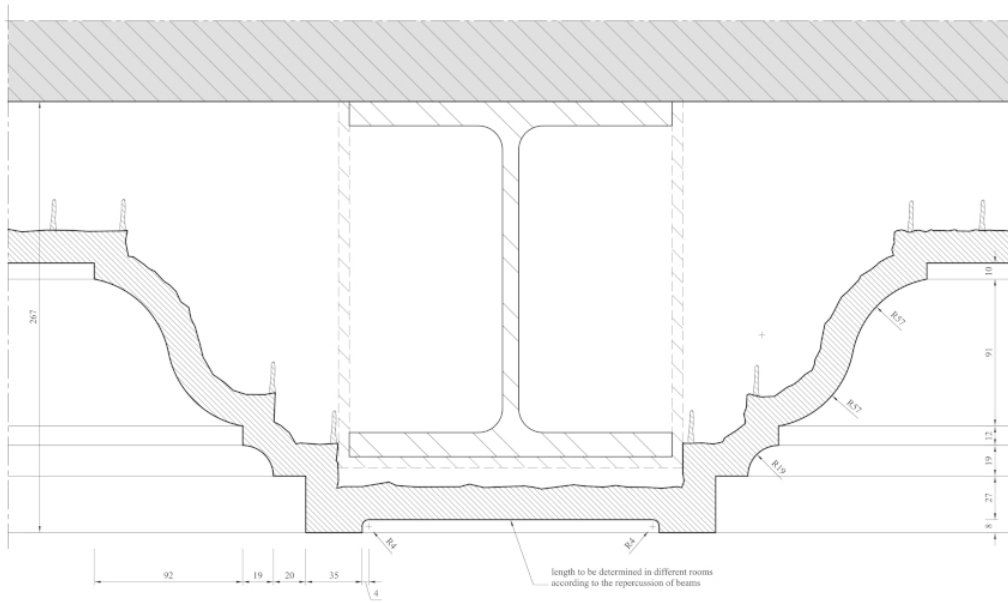


Scale :  $\frac{1}{20}$

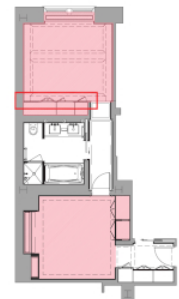
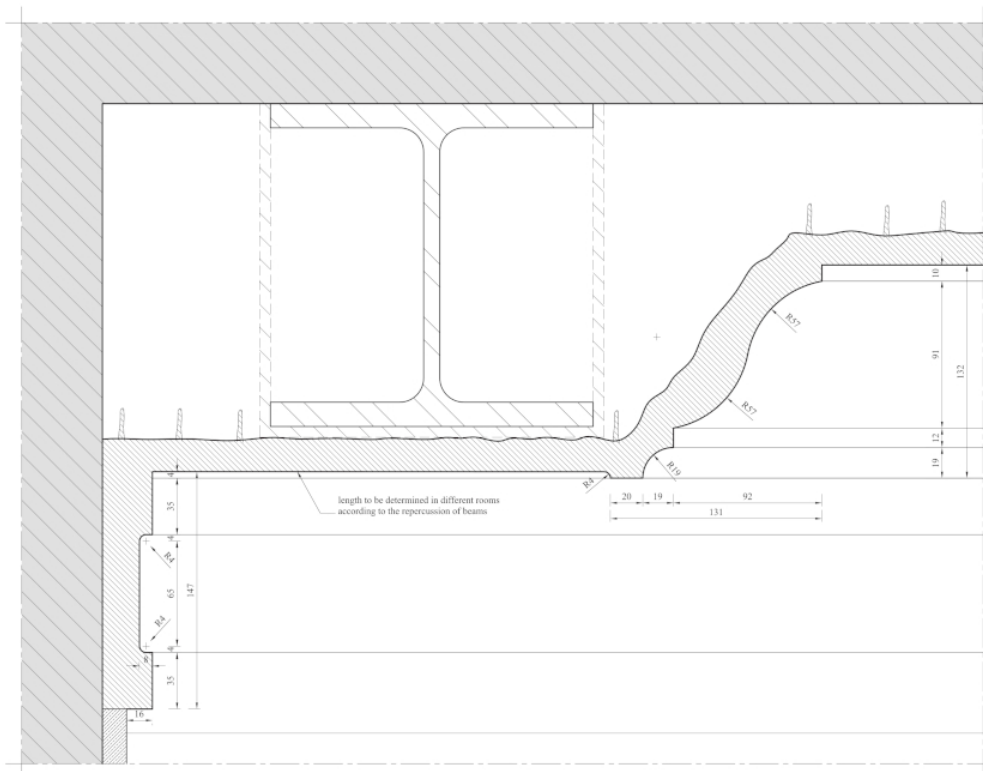


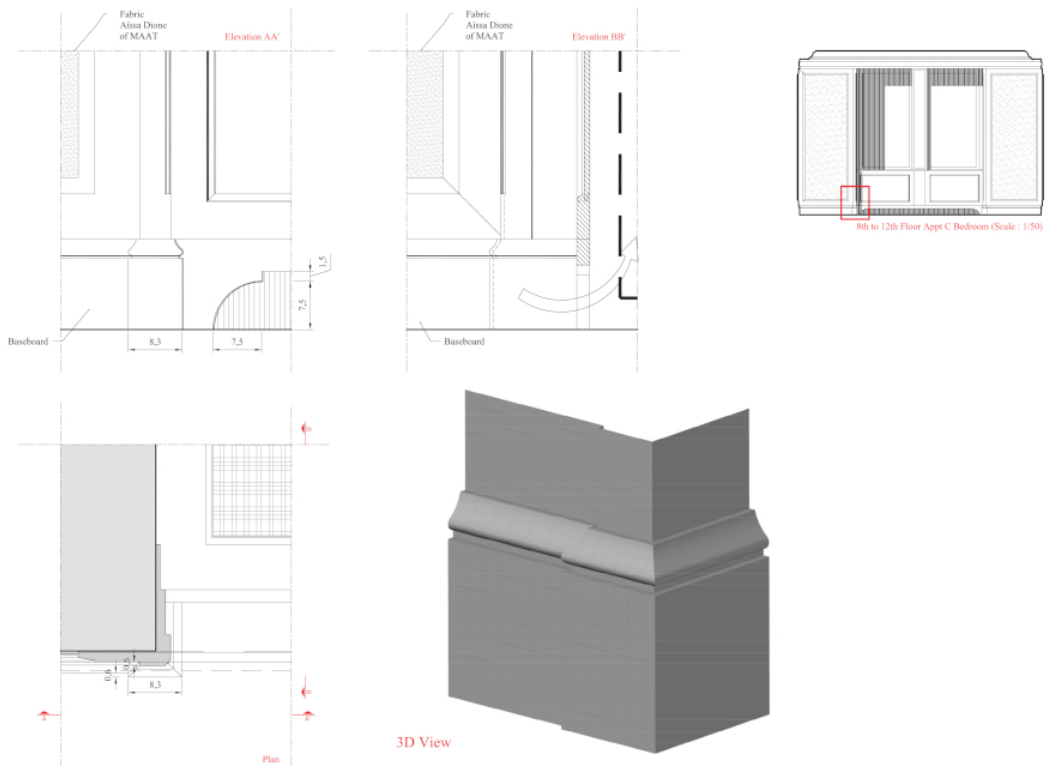
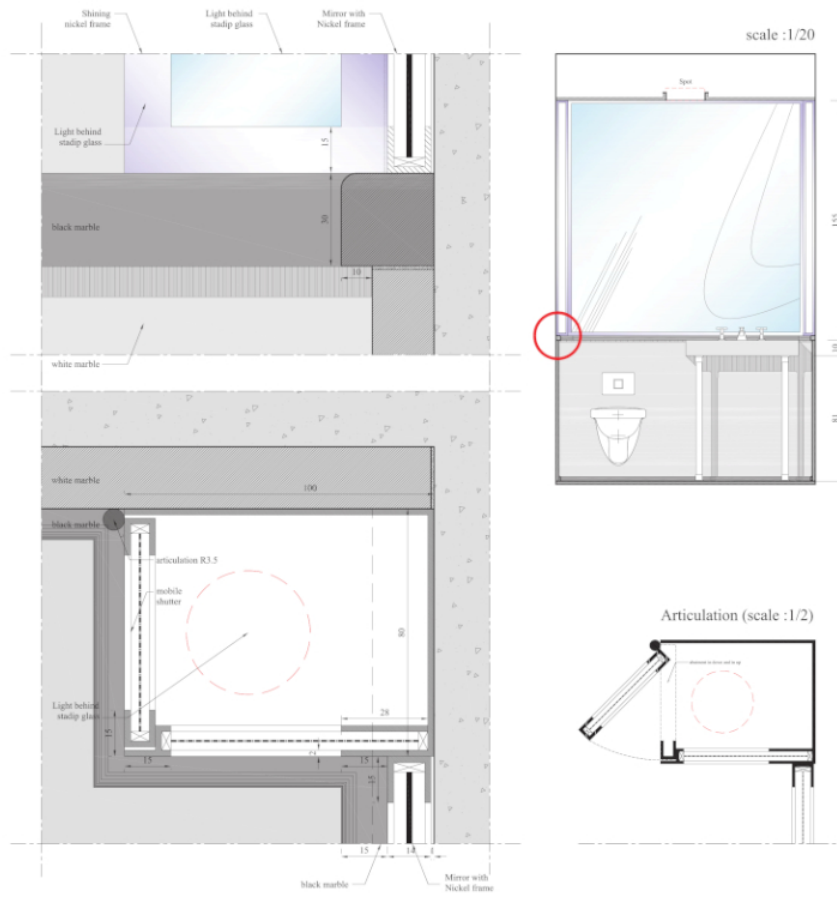


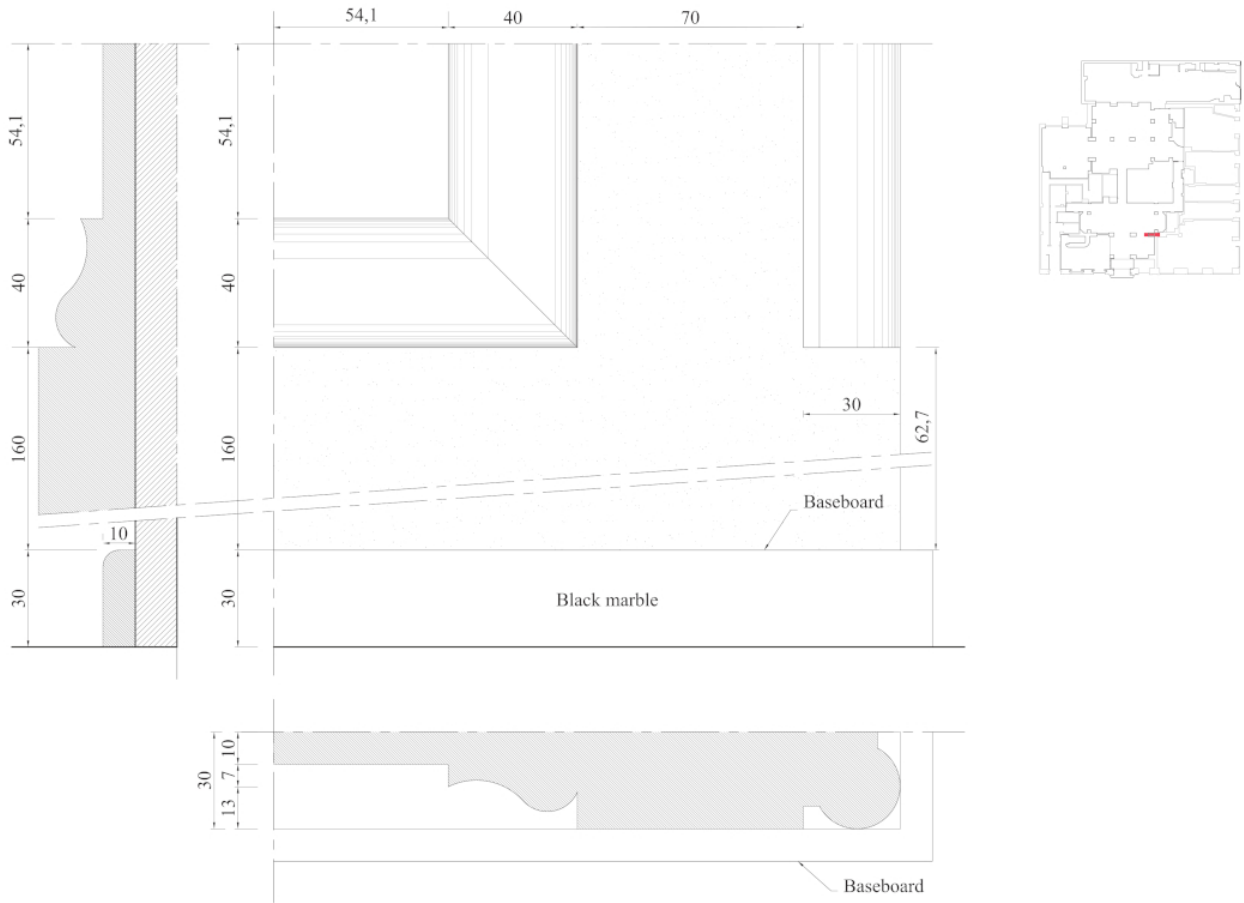




N







# Mark Hotel

Projet déco

Réhabilitation du Mark Hotel

Quand on produit les pièces graphiques pour le projet déco d'un grand nom de la scène internationale, la précision et la qualité graphique des plans participent à la réalisation d'ouvrages de qualité et à la communication commerciale du projet. Le dossier PRO se compose de plans, d'élévations et de carnets de détails, tous disponibles en version bilingue, formant ainsi une documentation complète.

---